



# Layer 2 MPLS Service

# Layer 2 MPLS Service

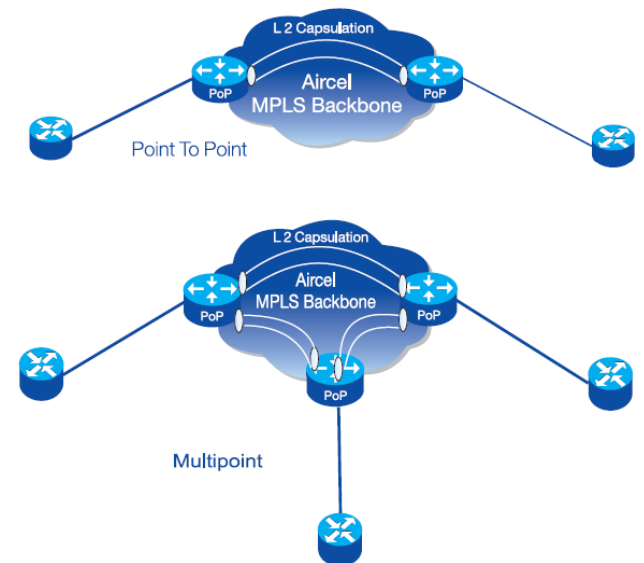
## A Cost Effective and scalable Layer 2 service

Aircel Layer 2 MPLS VPN offers a cost effective solution to provide layer 2 connectivity to customers with traditional offerings such as ATM, Frame Relay, Ethernet and HDLC/Point-to-Point Protocol (PPP) services. Delivered on its core MPLS backbone network, Layer 2 MPLS VPN utilises 'Any Transport over MPLS' (AToM) technology to provide point to point/multipoint topologies.

## Service Features

Enterprise can utilise existing infrastructure and create a much scalable and cost effective Layer 2 network with Aircel's Layer 2 offering. Standard features of the service include the following:

- **Wide Reach** enables seamless connectivity between two/multiple offices
- **Layer 2 Protocols Supported**
  - Ethernet
  - ATM
  - FR
  - PPP/HDLC
- **Topologies Supported**
  - Point to Point
  - Multipoint
- **Application Prioritization** for Ethernet based circuits that provide prioritized application delivery by classifying applications in multiple classes of service
- Legacy **Cost Savings** enables Enterprise to migrate L2 services to a highly redundant MPLS core
- High Performance core built on **Carrier Grade Routing Platforms**
- High Performance backed up by stringent & competitive SLAs on Round Trip Delay, Packet Loss and Uptimes
- **Multiple Access Options** enables connectivity via any access media



## Aircel Advantage

Aircel offers full design, implementation and end-to-end management of a MPLS VPN service, delivering the following benefits:

**Scalability:** With Aircel's MPLS VPN service you can scale your network as your business grows. Sufficient bandwidth at the core and tightly knit processes ensures deployment of fast scalable networks.

**Flexibility:** Aircel MPLS VPN offers flexibility to prioritise applications as per the business need. Quality of service parameters/policies defined by your business/IT is honoured at the core. Aircel MPLS VPN provides flexibility by customising the solution map of your business requirement.

**Simplicity:** Easy to deploy Wi-Max access option adds simplicity to the VPN network and no complex configurations are required to provision, monitor and manage your network.