



## **MPLS CASE STUDY (FINANCE COMPANY)**

### **Background:**

- Financial intermediary for infrastructure development
- Head-Quartered in Chennai

### **Requirement:**

- Company has multiple MPLS links running (approx. 70 links)
- Links are currently being provided by other service providers (Tata and Sify)
- Company requires Layer 3 MPLS VPN connectivity to connect their three Metro city offices
- Multiple applications - Voice, Video and Business Critical Data applications will run between these offices
- Prioritization of applications on MPLS backbone to improve the performance
- On successful implementation of these links, other offices of the company will be connected on to the MPLS network

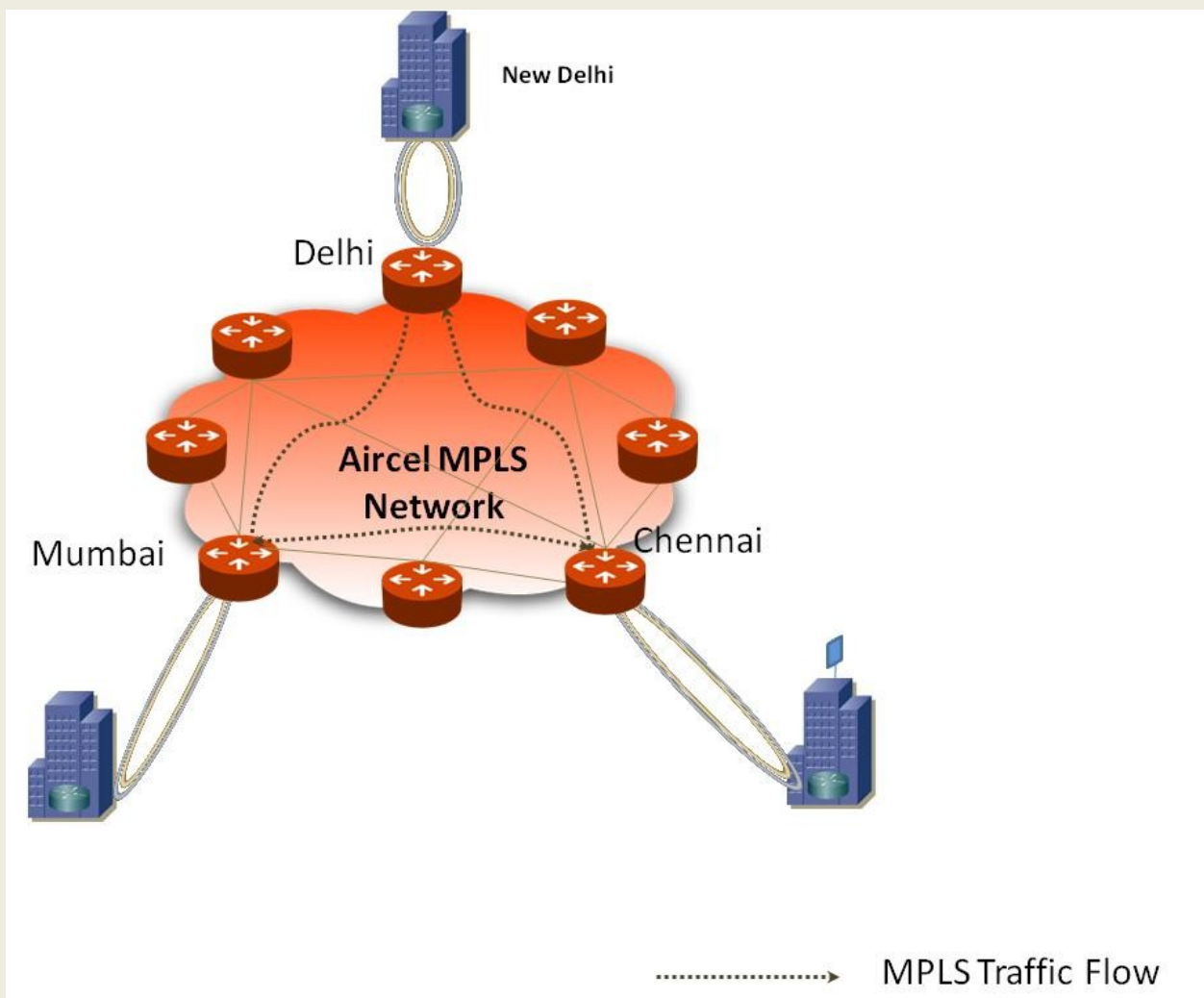
### **Challenge:**

- Stringent Delivery time lines
- To trust Aircel as a service provider for running their Voice, Video and Data applications on same link compared to existing players like Tata and Sify.
- Higher uptime requirement

### **Solution:**

- MPLS Bandwidth provisioned at each site as per the requirement
- Multiple Class of Service (CoS) for prioritization of different applications of the company
- InterCoS bursting to ensure full utilization of the link and value for money to the customer
- CoS 1, CoS 2 and CoS 4 marking of the company's traffic to ensure prioritization of the same on Aircel's state-of-the-art MPLS network
- Routing Protocol between CE-PE configured is BGP

Architecture:



Features:

- **Topology** :: Any-to-Any



- **Total MPLS bandwidth configured** :: 45 Mbps
- **Class of Service** :: CoS 1 (Voice), CoS 2 (Video) and CoS (Data)

**Benefits:**

- Highly scalable network architecture
- DS-3 Last Miles configured to cater to future bandwidth upgradation
- End-to-end stringent SLAs
- Faster deployment of the links